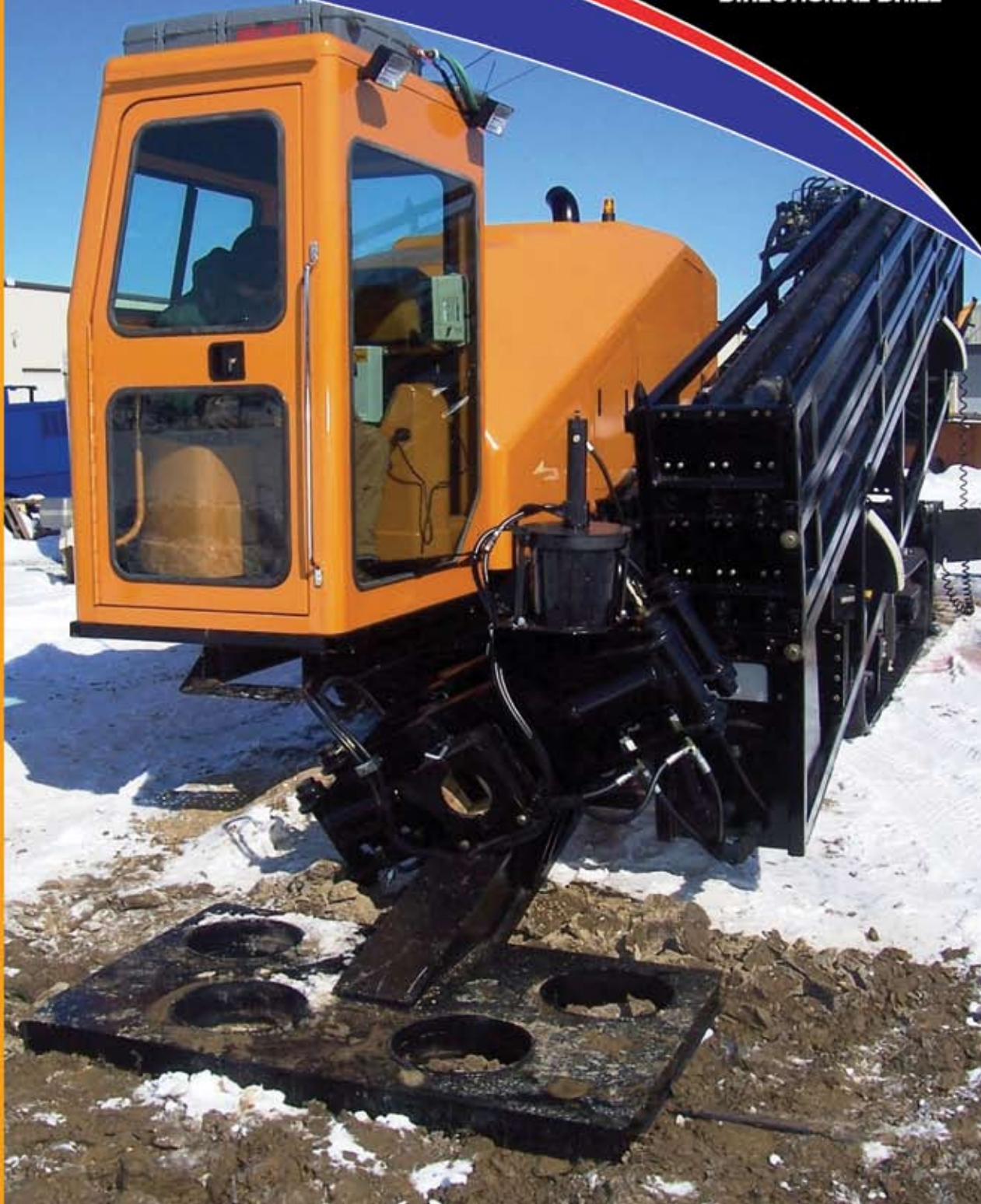


Earth  
Pro™  
*Solid*

# ASTECC

## DD-9014

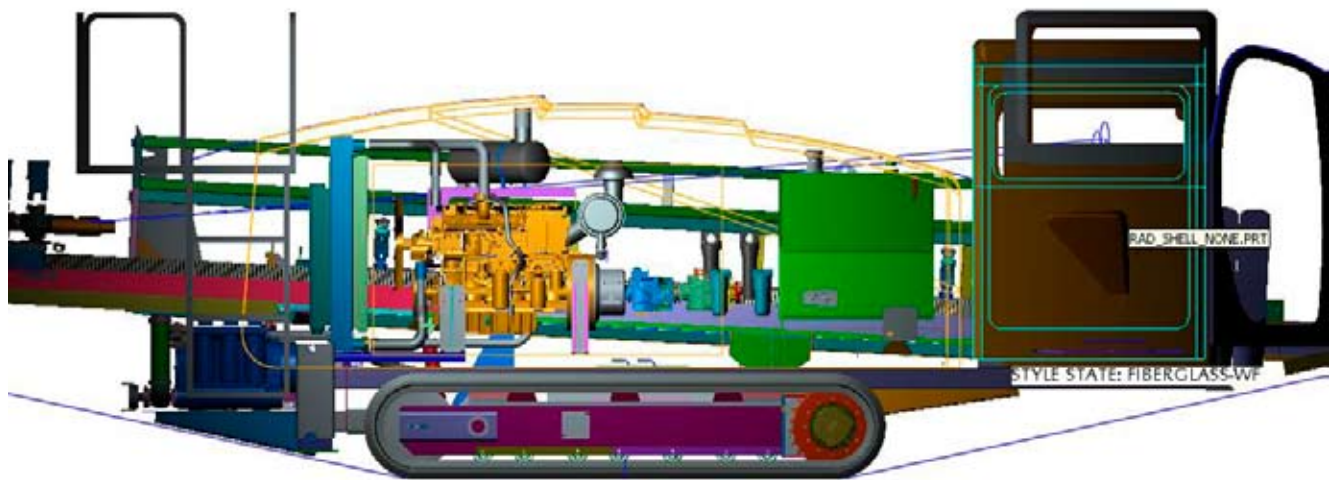
HORIZONTAL  
DIRECTIONAL DRILL



## BREAKTHROUGH SOLUTIONS



# DD-9014 HORIZONTAL DIRECTIONAL DRILL



## ENGINE

- Caterpillar C6.6 diesel, Tier III, Stage II certified
- 230 hp (171.1 Kw)
- Fuel capacity 67 U.S gallons (254 L) (Eight-hour operating capacity)
- Hydraulic capacity 107 U.S. gallons (405 L)
- Drive system: three pump drive

## ROTARY DRIVE

Rotary system ..... Pinion and gear drive, infinitely variable torque  
 Rotary (high torque) ..... 13,600 ft-lb (18,300 Nm)  
 Maximum rotary speed ..... 150 rpm

## CARRIAGE DRIVE

Maximum thrust/pullback ..... 90,000 lbs (40.8 Tonnes)  
 Carriage system ..... Rack and pinion,  
 four pinion drive with adjustable force limiter  
 Carriage speed ..... Up to 120 ft/min (36.6m/min)

## DRILLING UNIT

Travel system ..... Self-propelled on rubber tracks  
 Flat surface speed .... Up to 2.25 mph (3.62 km/h) forward and reverse  
 Track material ..... Polyurethane rubber  
 Drill angle ..... Fixed at 15 degrees/27% grade  
 Wrench/clamp ..... Pipe Hog® Open-top — 6-in cylinders @ 3,500 psi  
 ..... Tilted toward the operator for increased visibility.  
 Hold-down system ..... Circular pockets for I-beam stakes,  
 excavator driven

## OPERATOR CABIN

Standard features Heating and air conditioned, right mounted joystick

## DRILLING FLUID PUMP

Onboard mud pump ..... Piston pump with non-electric liner wash  
 Output ..... 0-200 gpm (113.6 L/m)  
 Maximum pressure ..... 1,100 psi

## PIPE LOADER

State-of-the-art rod loader uses 20-ft (6.10 m) stem. Onboard pipe capacity is 360 ft (109.7 m).

## DRILL PIPE (OPTIONAL)

Length ..... 20 ft (6.10 m)  
 Thread ..... 2 7/8 in IF  
 Weight ..... 358 lb (162.39 kg)  
 Tool joint O.D. .... 4.125 in (104.8 mm)  
 Fluid course ..... 1.5 in (38.1 mm)

## PROTECTIVE EQUIPMENT

A Zap-Alert System is standard equipment. Emergency shut down switch at driller's console and tram control. The ES!LOK® exit-side lockout system is standard equipment.

## APPROXIMATE WEIGHT AND DIMENSIONS

Approximate operating weight (with one pipe basket containing nine pieces of drill) ..... 39,950 lbs (17,894.16 kg)  
 Width ..... 98 in (2.49 m)  
 Height ..... 114 in (2.90 m)  
 Length ..... 367 in (9.32 m)

IMPORTANT: Astec Underground reserves the right to change these specifications without notice and without incurring any obligation relating to such change. This literature has been published for world-wide circulation. Availability of some models and equipment builds vary according to the country in which the equipment is used. The illustrations and text may include optional equipment and accessories and may not include all standard equipment. Your Astec dealer/distributor will be able to give you details of the products and their specifications available in your area.

NOTE: All specifications are stated in accordance with SAE Standards or Recommended Practices, where applicable.

© 2006 ASTEC UNDERGROUND. All Rights Reserved. ASTEC\_DD9014\_4\_017